

# A YEAR OF PHISHING

## JANUARY

New Years Day · January 1



## MARCH

St. Patrick's Day · March 14

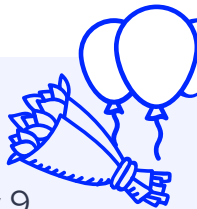
Red Nose Day · March 19

Mother's Day (UK) · March 14



## MAY

Mother's Day - US · May 9



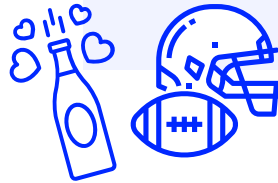
While many phishing attacks targeted at organizations use spear-phishing tactics, threat actors also often use seasonal events like Mothers Day, Black Friday, and Christmas to distribute phishing campaigns, taking advantage of increased online shopping for gifts and tickets.

## FEBRUARY

Superbowl · February 7

Valentines Day · February 14

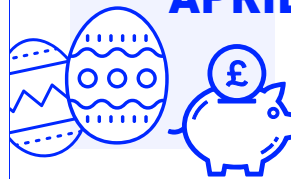
The Chinese (Lunar) New Year  
Mardi Gras · February 16



## APRIL

Easter · April 4

Tax Day · April 14



## JUNE

Father's Day - US · June 20

Amazon Prime Day · June 28



JULY - DECEMBER →

A YEAR OF  
**PHISHING**

### AUGUST

Back to school / starting college



### JULY

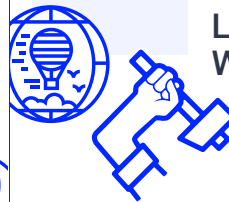
Independence Day (US) · July 4  
Olympic Games

Summer vacations



### SEPTEMBER

Labor Day (US) · September 6  
World Tourism Day · September 27



### OCTOBER

Halloween · October 31



### NOVEMBER

Thanksgiving - US · November 25  
Hanukkah · November 28

Shipping Surge  
Black Friday (US) · November 26  
Cyber Monday (US) · November 29  
Giving Tuesday · November 30



### DECEMBER

Christmas · December 25  
New Year's Eve · December 31



**IRONSCALES** offer an AI-driven, self-learning email security platform that provides a comprehensive solution to proactively fight phishing attacks. Our platform accelerates the prevention, detection and remediation of phishing attacks already inside your email with threat removal times in seconds.

**IRONSCALES** bring cutting-edge innovation to anti-phishing protection for organizations of all sizes, helping them stay safer together.